

177 MADISON AVENUE

MORRISTOWN, NJ



OFFICE SPACE FOR LEASE - 7,489 RSF

| | |
|------------------|---|
| Available Space: | 1st Floor - 7,489 RSF <ul style="list-style-type: none">• 4,823 RSF• 2,666 RSF > Contiguous |
| Rental Rate: | \$24.75 PSF + TE |
| Location: | <ul style="list-style-type: none">• Located on Morristown's Prestigious Madison Avenue• Convenient to major highways and Newark Liberty Airport• Access to NJT Midtown Direct train services |
| Amenities: | <ul style="list-style-type: none">• Owner occupied building• On-site security desk and building management• Restaurants and hotels nearby• Madison Avenue traffic light at building entrance/exit• Small floor plate with great window line• Storage areas available |

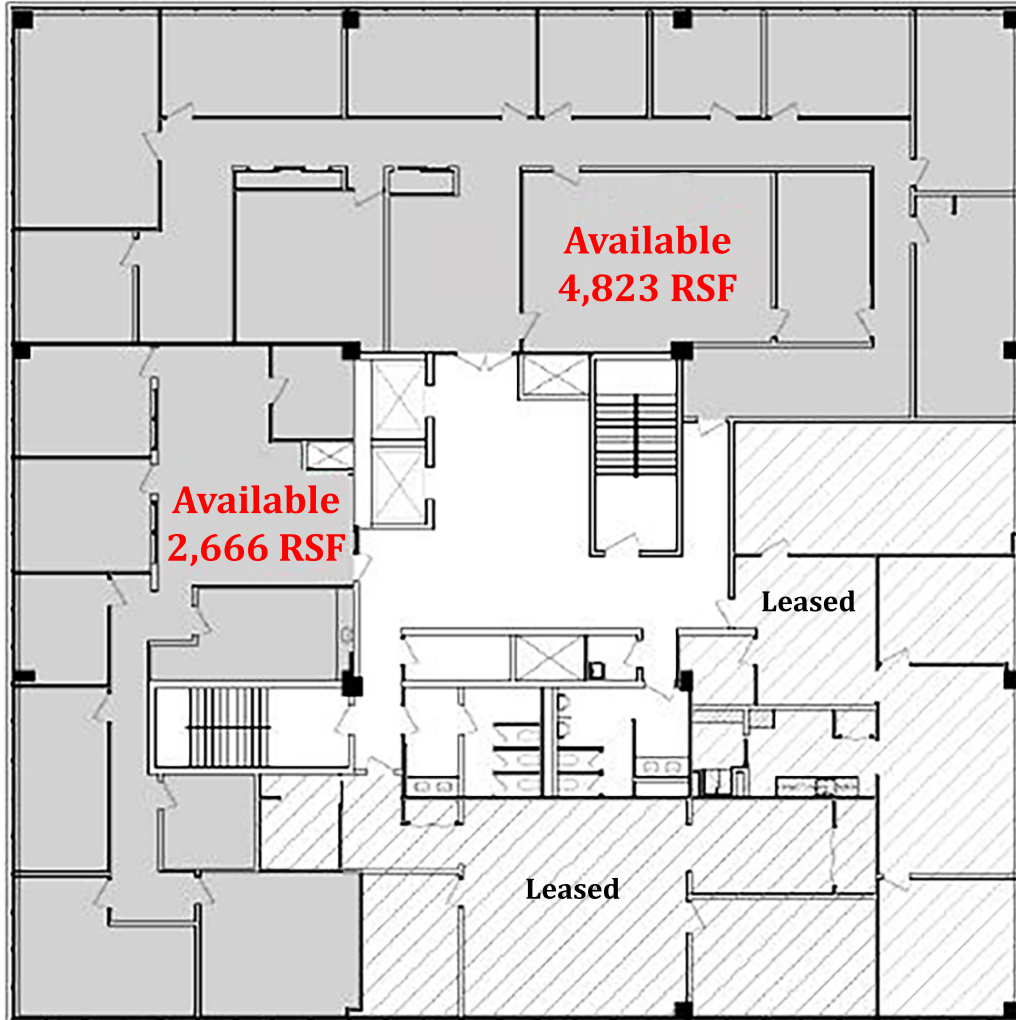
225 Littleton Road • Morris Plains, NJ 07950 • 973-267-7778 • weichertcommercial.com

No warranty or representation, express or implied is made as to the accuracy of the information contained herein, and same is submitted subject to errors, omissions, change of price, rental or other conditions, withdrawal without notice and to any special listing conditions imposed by our principals.

177 MADISON AVENUE

MORRISTOWN, NJ

1st Floor – 7,489 RSF



Please Contact:

Thomas Semler
Senior Vice President
Office: 973-898-8610
Cell: 973-214-8843

tsemler@weichertcommercial.com

Connor Smith
Sales Associate
Office: 973-898-8793
Cell: 973-901-6733

cpsmith@weichertcommercial.com

225 Littleton Road • Morris Plains, NJ 07950 • 973-267-7778 • weichertcommercial.com

No warranty or representation, express or implied is made as to the accuracy of the information contained herein, and same is submitted subject to errors, omissions, change of price, rental or other conditions, withdrawal without notice and to any special listing conditions imposed by our principals.