



**RETAIL/OFFICE FOR LEASE**

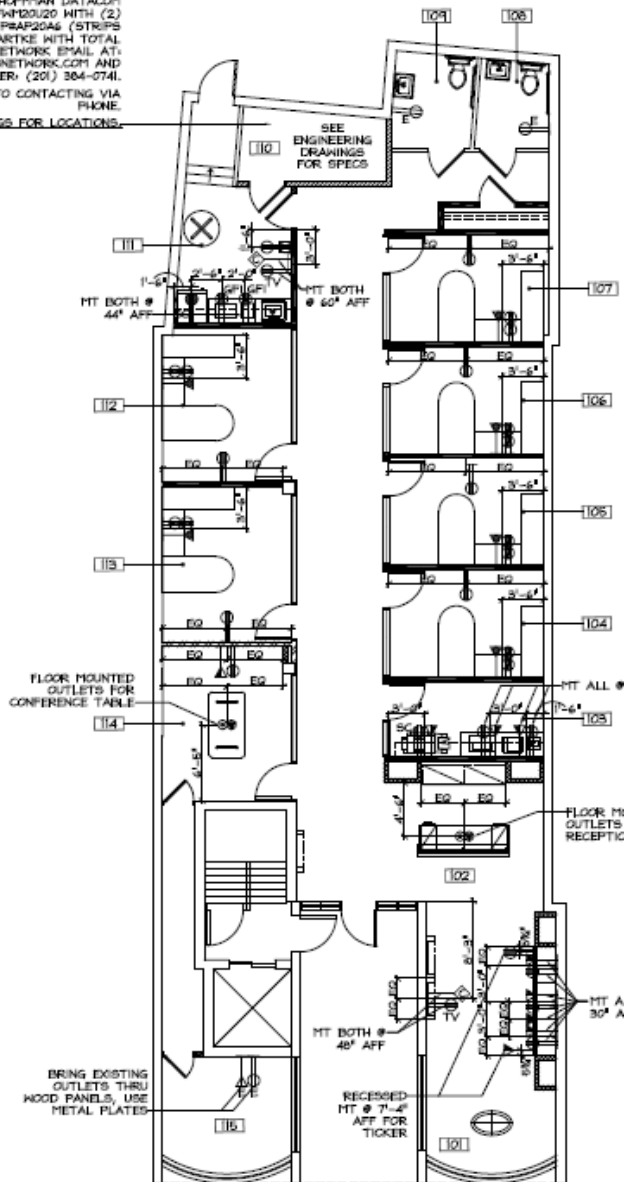
**22 N PARK PLACE**

MORRISTOWN, NEW JERSEY

**CBRE**

# FLOOR PLAN

SERVER CABINET FOR THIS ROOM TO BE:  
 CABINET DIMENSIONS: 20"W x 37"H x 20"D  
 CABINET SPECIFICATION: HOFFMAN DATACOM  
 20U CABINET - P1E09FH20U20 WITH (2)  
 HOFFMAN POWER STRIPS - P1AP20A6 (STRIPS  
 BY 6C) CONTACT: RON BARTKE WITH TOTAL  
 SOLUTIONS NETWORK EMAIL AT:  
 RBARTKE@TOTALSOLUTIONSNETWORK.COM AND  
 PHONE NUMBER: (201) 384-0741.  
 PLEASE EMAIL PRIOR TO CONTACTING VIA  
 PHONE.  
 SEE ENGINEERING DRAWINGS FOR LOCATIONS.



Beautiful first floor space located “on the Green” in the heart of downtown Morristown, off the corner of Washington St.

Area Co-tenants: Provident, Athleta, Charles Schwab. Playa Bowls, Starbucks and Committed Pig.

# PROPERTY HIGHLIGHTS

## **AVAILABILITY:**

3,240 SF First Floor Retail/Office Space (Former TD Ameritrade). Space has 2 ADA restrooms and can be vented for cooking.

**NNN:** \$12.00/SF

## **ASKING RENTAL RATE:**

Upon request.





**DANIEL CASEY**  
 First Vice President  
 +1 973 224 3817  
 Daniel.casey@cbre.com

**MARTA VILLA**  
 Senior Vice President  
 +1 973 715 8385  
 marta.villa@cbre.com

**SAMUEL BERNHAUT**  
 Senior Vice President  
 +1 917 270 6204  
 Sam.bernhaut@cbre.com

© 2022 CBRE, Inc. All rights reserved. This information has been obtained from sources believed reliable but has not been verified for accuracy or completeness. You should conduct a careful, independent investigation of the property and verify all information. Any reliance on this information is solely at your own risk.

