



# Maestro+ 1212

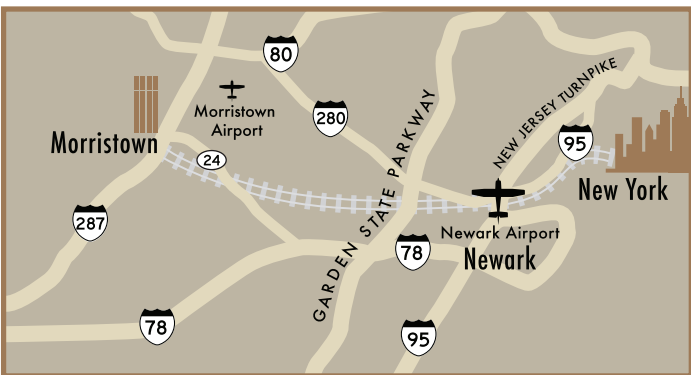
**SYMPHONY**  
WORKPLACES

89 Headquarters Plaza North  
(43 Speedwell Ave.)  
Morristown NJ 07960

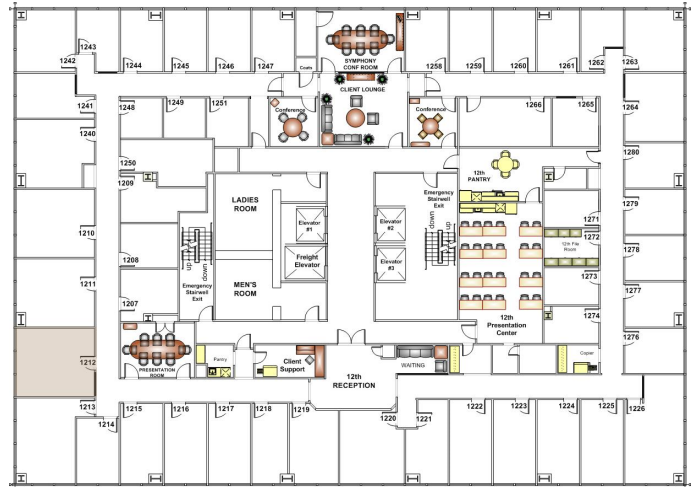
Work Smarter. The hybrid workplace of the future is here.

- Now*
- Prebuilt and furnished
  - Flexible terms
  - Simple service agreement
  - Immediate occupancy
  - Professional services included
  - Established service provider
  - Variable office sizes as needed

- Before*
- Major capital investment
  - Long lease lock-up
  - Complex leases with hidden escalations
  - Uncertain build out periods
  - Substantial full time admin expenses
  - Unreliable subleases
  - Fixed office space sizes



Photos can't do justice to the stunning background and expansive size of this Maestro+ office. Designed to project CEO level simplicity with all custom furnishings.



### Included in the Monthly Charge for this Unit

- Business Grade Wi-Fi Throughout
- Upgrade Finishes from Floor to Ceiling Throughout
- Custom Fit Geiger Furnishings
- Utilities and RE Taxes
- Directory Listing in the Building Lobby and throughout HQ Plaza Complex
- 24/7 Building and Office Access with Security System
- Private Mailbox and Daily Mail and Package Handling
- Available Voice and Broadband Communication Connections

### Amenities and Services Included with this Unit

- Professional On-Site Management and Administrative Services
- Reception Area with Concierge Service on the Floor
- Pantry Use and Beverage Service
- Daily Janitorial Services
- Conference Room Use
- Worldwide Business Center Access And more...

### Amenities Available within the Headquarters Plaza Complex

- Hyatt Hotel
- Health Club
- Underground Parking
- Food Court and Numerous Restaurants
- Child Care Center
- Walk to NY Train Station; County Courthouse; Morristown Green

### For More Information:

Nick Logothetis  
 Email: [sales@workplacesmail.com](mailto:sales@workplacesmail.com)  
 Phone: (973) 644-3000  
[www.njworkplaces.com](http://www.njworkplaces.com)

